

**WEST SEGMENT**  
 SPLIT DIAMOND AT 68TH/70TH ST WITH CD ROADS  
 INCLUDES HAWLEY ROAD INTERCHANGE  
 DOUBLE DECK BETWEEN THE CEMETERIES  
 WEST SEGMENT PROGRAM COST \$295M

WEST SEGMENT LIMIT  
 EAST SEGMENT LIMIT

PROGRAM COSTS AND IMPACTS  
 EAST OF HERE ARE INCLUDED WITH  
 THE EAST LEG AMOUNT

SCALE  
 0 200'



- LEGEND**
- Bridge
  - Pavement
  - Relocation
  - Noise Barrier
  - Retaining Wall
  - NHI Boundary
  - Existing Right-of-Way

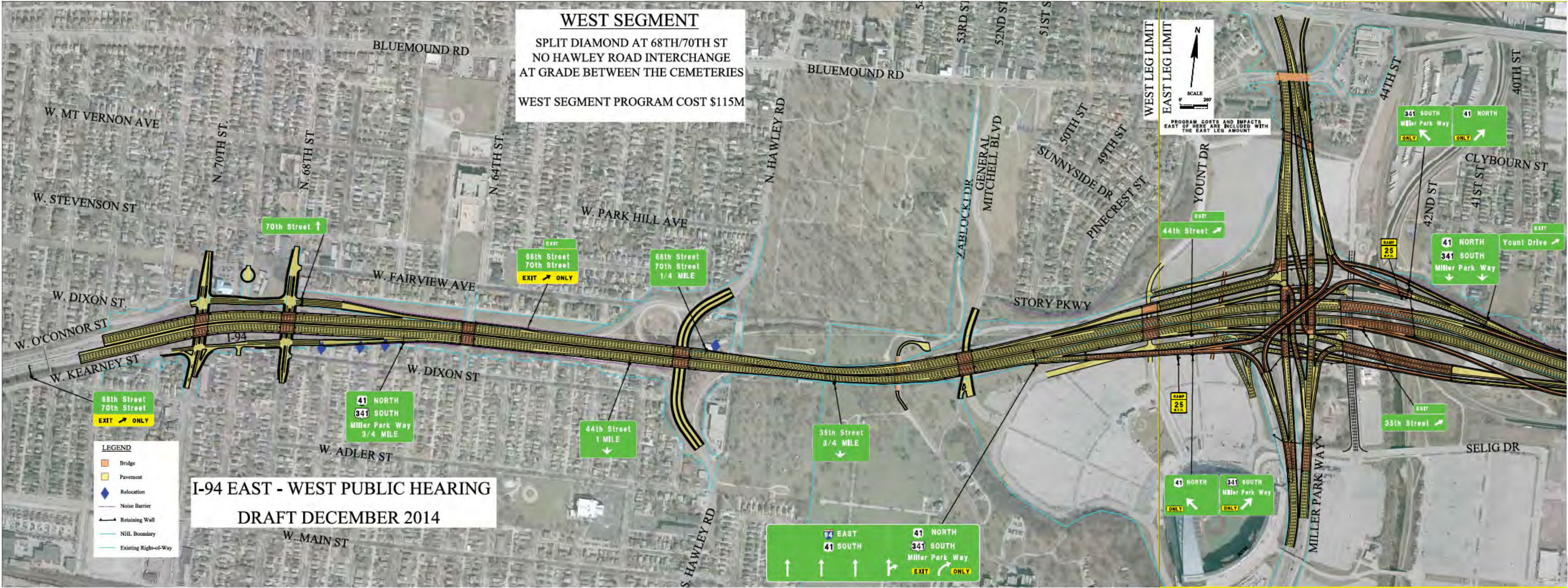
**I-94 EAST - WEST PUBLIC HEARING**  
**DRAFT DECEMBER 2014**



**WEST SEGMENT**  
 SPLIT DIAMOND AT 68TH/70TH ST  
 NO HAWLEY ROAD INTERCHANGE  
 AT GRADE BETWEEN THE CEMETERIES  
 WEST SEGMENT PROGRAM COST \$115M

**I-94 EAST - WEST PUBLIC HEARING**  
**DRAFT DECEMBER 2014**

- LEGEND**
- Bridge
  - Pavement
  - Relocation
  - Noise Barrier
  - Retaining Wall
  - NHI Boundary
  - Existing Right-of-Way



WEST LEG LIMIT  
 EAST LEG LIMIT

SCALE 200'

PROGRAM COSTS AND IMPACTS EAST OF HERE ARE INCLUDED WITH THE EAST LEG AMOUNT

88th Street  
 70th Street  
 EXIT ONLY

41 NORTH  
 341 SOUTH  
 Miller Park Way  
 3/4 MILE

EXIT ONLY  
 88th Street  
 70th Street

88th Street  
 70th Street  
 1/4 MILE

44th Street  
 1 MILE

35th Street  
 3/4 MILE

EXIT  
 44th Street

41 NORTH  
 341 SOUTH  
 EXIT ONLY

EXIT ONLY  
 341 SOUTH  
 Miller Park Way

EXIT ONLY  
 341 SOUTH  
 Miller Park Way

EXIT ONLY  
 41 NORTH

EXIT ONLY  
 41 NORTH  
 341 SOUTH  
 Miller Park Way

EXIT ONLY  
 Yount Drive

EXIT ONLY  
 35th Street

94 EAST  
 41 SOUTH  
 EXIT ONLY

41 NORTH  
 341 SOUTH  
 Miller Park Way  
 EXIT ONLY

**I-94 EAST-WEST PUBLIC HEARING  
DRAFT DECEMBER 2014**

**WEST SEGMENT**  
 SPLIT DIAMOND AT 68TH/70TH STREET  
 HALF DIAMOND AT HAWLEY ROAD WITH AUXILIARY LANES  
 AT GRADE BETWEEN CEMETERIES  
 WEST SEGMENT PROGRAM COST \$125M

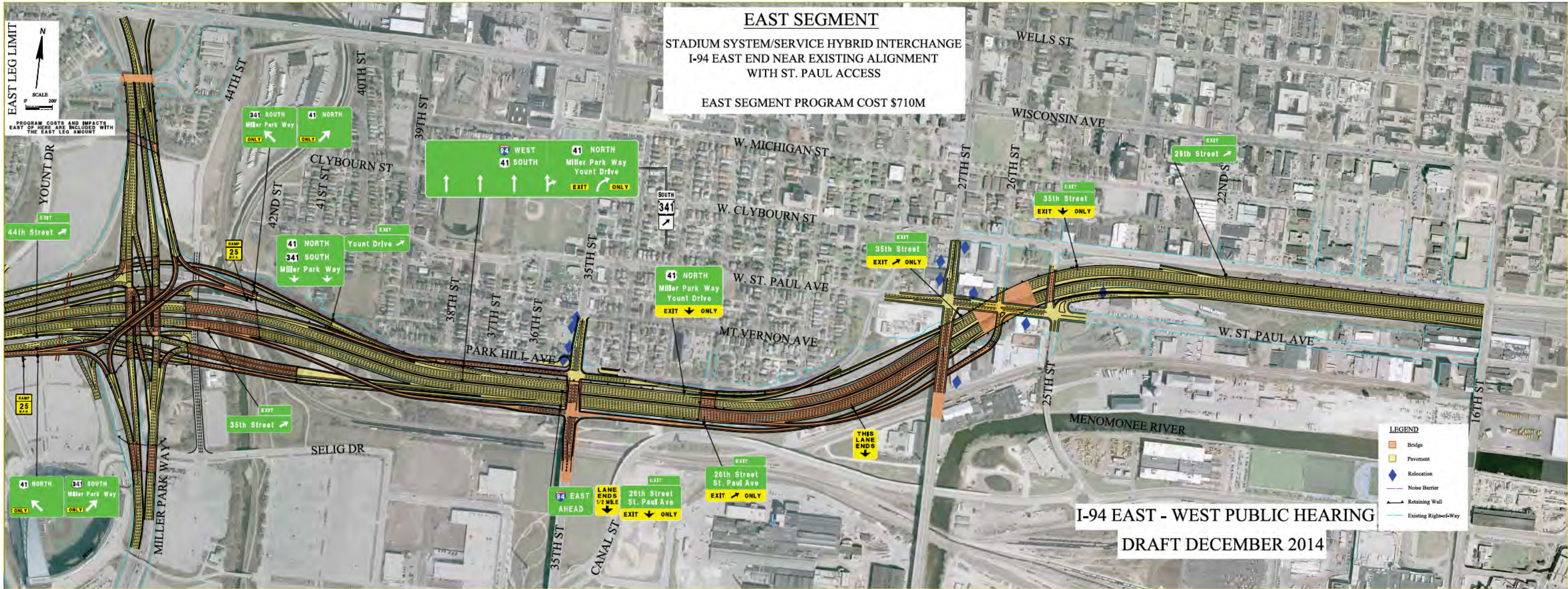
WEST SEGMENT LIMIT  
 EAST SEGMENT LIMIT  
 SCALE 200'  
 PROGRAM COSTS AND IMPACTS  
 EAST OF HERE ARE INCLUDED WITH  
 THE EAST LEG AMOUNT



The weaving distances between 68th Street ramps and Hawley Road ramps are well below the minimum recommended length. Further study is required to determine if it is an acceptable length.

Further study is being done to determine if Hawley Road should go over or under I-94.

94 EAST  
 41 SOUTH  
 41 NORTH  
 341 SOUTH  
 Miller Park Way  
 EXIT ONLY



**EAST SEGMENT**  
 STADIUM SYSTEM/SERVICE HYBRID INTERCHANGE  
 I-94 EAST END NEAR EXISTING ALIGNMENT  
 WITH ST. PAUL ACCESS  
 EAST SEGMENT PROGRAM COST \$710M

EAST LEG LIMIT  
 SCALE 200'  
 PROGRAM COSTS AND IMPACTS EAST OF HERE ARE INCLUDED WITH THE EAST LEG AMOUNT

- LEGEND**
- Bridge
  - Pavement
  - Relocation
  - Noise Barrier
  - Retaining Wall
  - Existing Right-of-Way

**I-94 EAST - WEST PUBLIC HEARING**  
 DRAFT DECEMBER 2014